



SyncroLight

Show Selector Module

User Manual

Version 1.1

June 2016



 syncrolight.co.uk

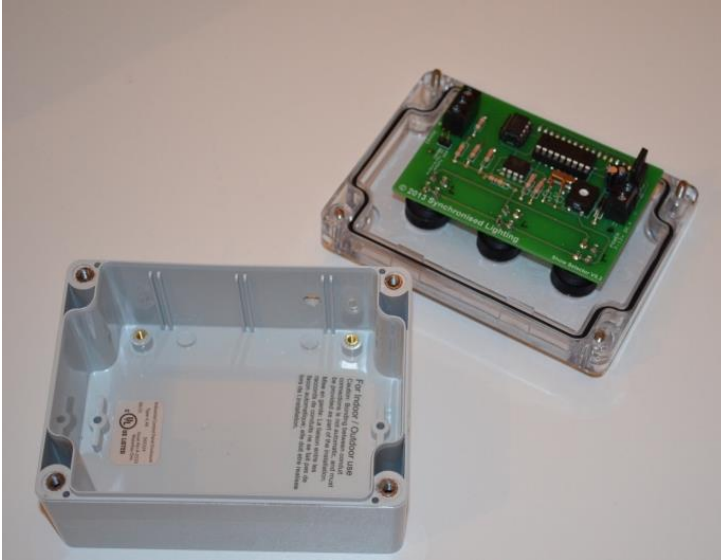
 01252 687136

 support@syncrolight.co.uk

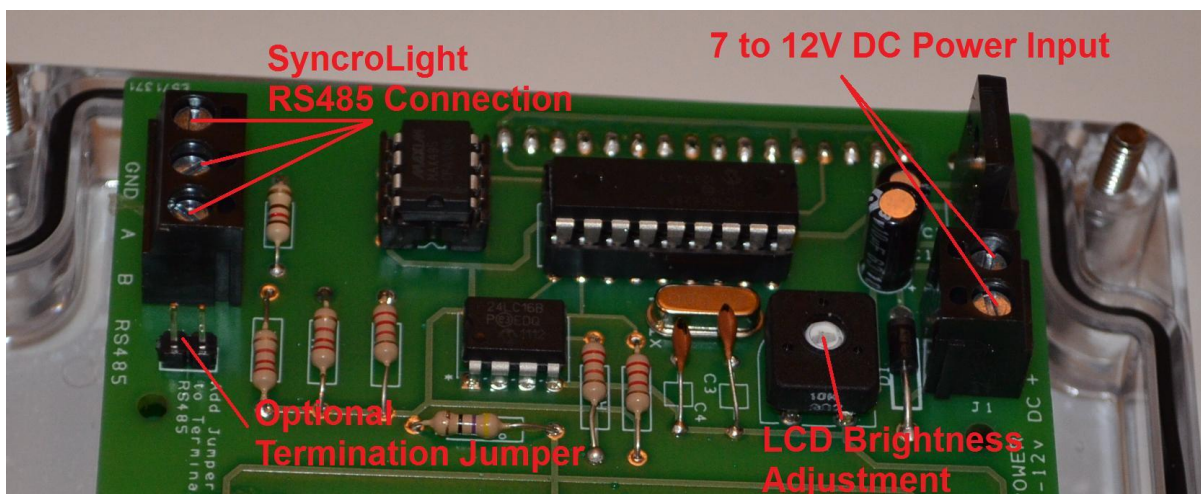
1. Setup

The Show selector requires connections to a suitable 7-12V DC power supply and your SyncroLight RS485 network.

- 1) Carefully unscrew the 4 retaining screws in the corners of the front of the enclosure and remove the lid. The buttons, LCD, and circuit board will all remain attached to the lid of the enclosure as shown below.



- 2) You can now connect the Power and SyncroLight RS485 connections to the circuit board at the indicated points (See image below). The cables should be threaded through the hole in the case before being connected to the circuit board. The power supply must be between 7 and 12V DC. Ensure you carefully support the PCB when tightening the screws and ensure you get the correct polarity for the power supply.



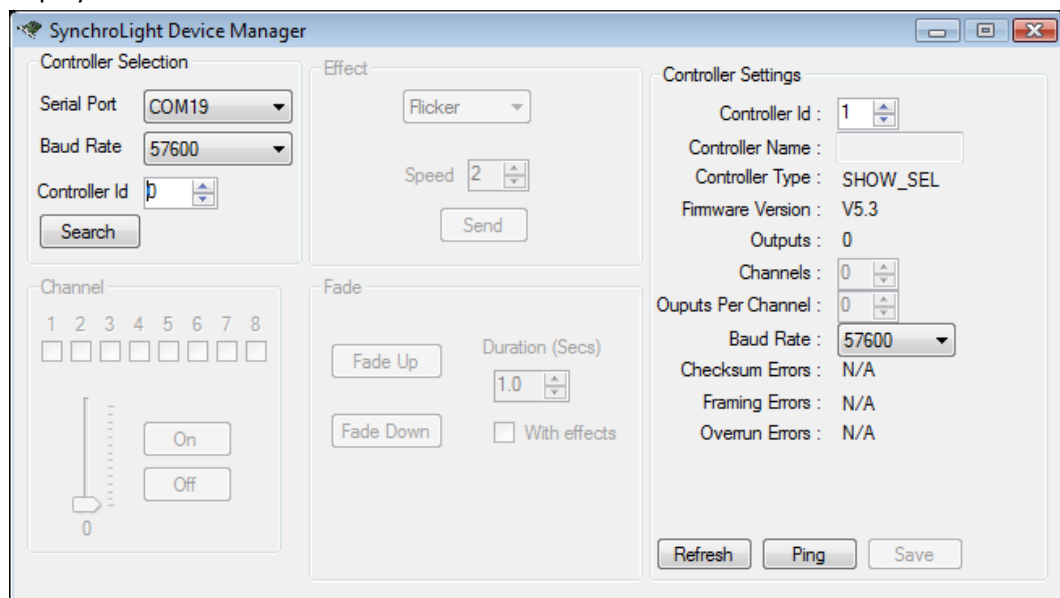
- 3) The SyncroLight RS485 connection can be on the same network as other controllers, or can be on its own dedicated network. For larger displays we recommend you use a separate network.
- 4) It is often recommended that RS485 networks are correctly terminated to ensure good communication. If the Show Selector is at the end of your network, or is on its own dedicated network you may wish to install a PCB jumper onto the indicated pins to terminate the network.
- 5) The circuit board contains a brightness adjustment screw (again indicated on the previous image). This is set during assembly but whilst you have the unit open you may wish to power up the Show Selector and ensure the LCD is clear. Carefully turn the screw to adjust the LCD brightness if required.
- 6) If you wish to mount the Show Selector on a post or wall, use the mounting holes in the 4 corners of the case (Next to the ones which connect the lid to the case). Note these can only be accessed when the lid is removed.
- 7) The enclosure for the Show Selector is weatherproof and is suitable for short-term use outdoors. If possible we recommend the unit is mounted in a sheltered location to provide additional protection.
- 8) To ensure a good weatherproof seal, pay particular attention to the cable entry hole. A small hole is recommended to help prevent condensation and to allow any moisture to exit the enclosure. However if the bottom of the unit is likely to be exposed to splashing water you may prefer to seal the unit by applying a little silicon around the cable entry hole (or fit a cable entry gland), but be sure to regularly check the unit in case of any build up of condensation or moisture inside the unit.
- 9) We also recommend leaving a little slack in the cable inside the enclosure and tightly attaching a plastic cable tie (or similar item) around them immediately inside the enclosure. This will provide some protection in the event of the cables being pulled tight. Helping prevent damage to the unit and ensuring cables cannot easily be pulled out from the unit.
- 10) You can now carefully reassemble the unit by placing the lid onto the enclosure, ensuring the cables exit from the bottom of the case (not the top). Pay particular attention to the sealing ring on the case to ensure a weatherproof seal. Tighten the screws, ensuring not to over tighten as this could crack the case.

2. RS485 Configuration

The Show Selector has a unique ID on the SyncroLight RS485 network, just like all other SyncroLight Devices.

The Unit comes pre-configured with a device Id of 1 and a baud rate of 57600. If you wish to change these settings follow the instructions below:

- 1) Connect the unit to your computer via a USB-RS485 module.
- 2) Apply power to the Show Selector. After a few seconds the LCD should display 'ERROR Not Connected'.
- 3) Start the SyncroLight Device Manager.
- 4) Ensure the baud rate is set to 57600 and the serial port is set accordingly for your USB-RS485 module. Set the Controller Id to 0 so that any device will respond. The Show Selector details should now appear on the right (as below). The Show Selector should display "Connected." on the LCD.

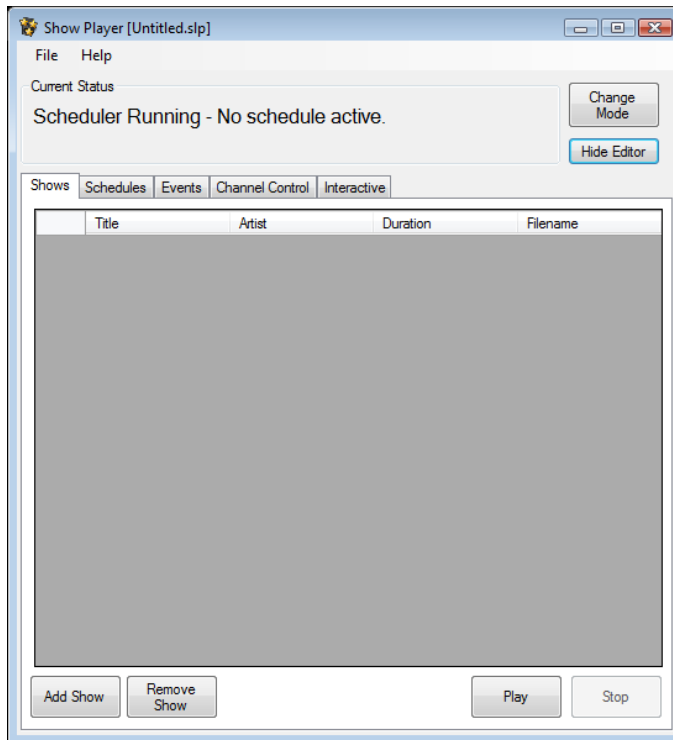


- 5) The Show Selector comes preconfigured with an Id of 1. If you wish to change the Id or baud rate, set the values in the Controller Settings area on the right and click Save. Power the Show Selector Off and On and verify your new settings.

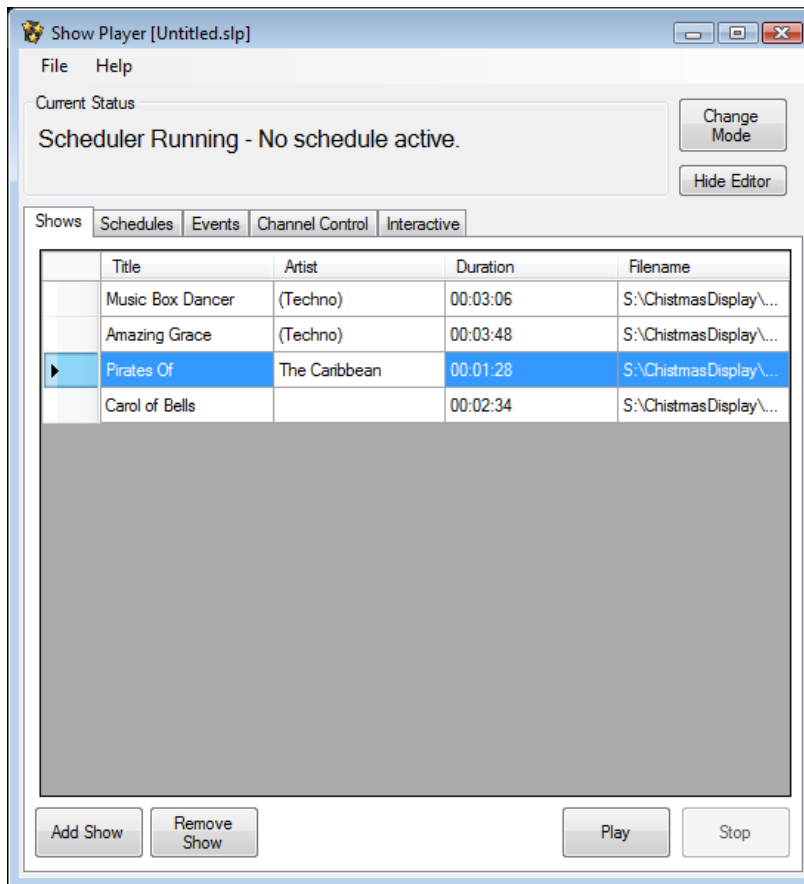
3 Using the Show Selector

The Show Selector integrates with the Show Player from the SyncroLight Software Package. A Professional Licence is required to use the Show Selector.

- 1) Start the Show Player and either create a new schedule by selecting File/New or open on existing schedule. If the full editor is not displayed click the 'Show Editor' button. You should now have a screen as shown below.



- 2) Next add some shows to your schedule. Under the "Shows" tab click "Add Show" to add some shows. The LCD on the show selector can display 2 Lines of 16 characters. The Title is displayed on the first line and the Artist on the second line. Click on the Title and Artist names in the grid to edit the Title/Artist names accordingly to ensure they will fit onto the LCD display. Use the Artist for the 2nd line of the Title if required.



- 3) Once you have added your shows click on the “Interactive” tab. Check the “Use Show Selector..” checkbox and set the Network and Device ID to match that of your setup. If the network list is blank, go to the “Channel Control” tab and add your network with the “Add Network” button.
- 4) With the Show Selector connected and powered up, click the “Download Show Titles” button. This downloads your list of shows to the Show Selector. The LCD will display “Title No:1” etc as the titles are downloaded and will display “Ready.” When complete. The Show Selector will remember the titles of your shows, even when powered off. If you ever load a different schedule or add or remove shows, you must always remember to download the titles to ensure the computer and Show Selector remain in sync.
- 5) Now Change the mode of the Show player to Interactive by clicking the “Change Mode” button and selecting “Interactive” mode. You will now be able to use the Left and Right buttons on the Show Selector to move through the list of shows. The middle button on the Show Selector will start the selected show.
- 6) When a show is playing you will notice the Show Selector displays “Playing” and the time by default. You can change this by changing the “Playing Message” on the “Interactive” tab of the Show Player.
- 7) The “Interactive” tab also allows you to add ‘Idle’ sequences. These sequences play whenever one of your main shows is not playing. These ‘Idle’ sequences will run in turn but will be immediately interrupted when a show is started from the Show Selector, Android App or manually from the Show Player.

- 8) In the Schedules tab you can create timed schedules to control what times your interactive shows are enabled. The “Inactive Message” under the “Interactive” tab is displayed when in “Use Scheduler mode” and no schedule is active. You can change this from the default “Shows Disabled” message to display your show times i.e. “Shows run daily 7pm-9pm”.
- 9) The Show Selector only allows selection of shows when in Interactive mode ; either manually or via a schedule. When using other Show Player modes such as “Play Shows Continually” or “Play Shows at Specified Intervals” the Show selector will display a preset message.
- 10) The Show Selector can be used alongside our Android Light Show App, which allows shows to be started over WiFi from a mobile device.